

2026



ECMI MEMBERSHIP

EUROPEAN
CAPITAL
MARKETS
INSTITUTE

PLACE DU CONGRES 1
1000 BRUSSELS

01

MEMBERSHIP BENEFITS

The European Capital Markets Institute (ECMI) conducts independent research on a broad range of issues related to capital markets with the aim of informing debate and policymaking.

Through its various activities, it facilitates interaction among market participants, policymakers and academics. ECMI is managed and staffed by the Centre for European Policy Studies (CEPS) in Brussels.

Through its [Commentaries and Policy Briefs](#), ECMI analyses the latest regulatory developments and puts forward proposals and recommendations to help shape the regulatory and policy debate. ECMI also produces in-depth [Research Reports](#) on key policy issues and market developments. Alongside its own research initiatives, ECMI responds to calls for proposals from external entities and welcomes contributions from experienced academics.

ECMI regularly organises workshops, seminars and [Task Forces](#) on a variety of issues facing European capital markets. Participation in [ECMI events](#) offers multiple networking opportunities. The ECMI Annual Conference is a unique event in Brussels, bringing together over 30 high-level speakers and more than 300 participants.

The annual edition of the [Statistical Package](#) is a comprehensive collection of the most relevant data on key segments of European and global capital markets, covering equity markets, debt securities, securitisation, covered bonds, exchange-traded and over-the-counter derivatives, asset management, mutual funds, insurance companies and pension funds.

02

Timely updates and analysis on the latest market and regulatory developments in European capital markets

WHY BECOME A MEMBER

- Benefit from our **in-house expertise** through meetings, conference calls or webinars with our staff
- Engage with **extensive networks** of market participants, regulators and academics
- **Become a partner/co-host** in the organisation of events devoted to topics of special interest
- Participate in the **board meetings and/or annual general meeting** of ECMI Members
- Receive **priority updates** of our commentaries, policy briefs, working papers
- **Free access** to our **annual statistical package**, providing a comprehensive database of accurate and up-to-date statistics on Europe's capital markets
- Support **policy-oriented research** to enhance the growth potential of European capital markets
- **Free** attendance at **all ECMI events and workshops**
- Qualify for **significant discount** on fees to join **ECMI Task Forces**, including webinars
- **Special rate** to attend **CEPS events**

HOW TO JOIN?

- Please fill in the form and send a signed copy by email to ecmi@ceps.eu
- If you have any questions or need help, contact the research team.
- Your membership application will be formally reviewed by the ECMI Board.

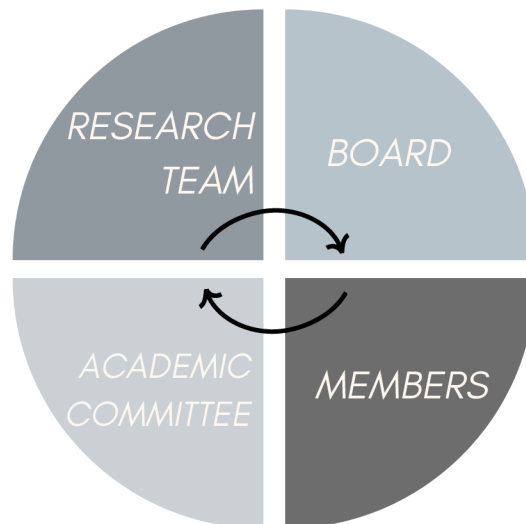
Corporate membership	€ 4,000/per year
Board membership	€ 6,700/year
Academic/University	€ 500/year

03

ECMI STRUCTURE

GOVERNANCE

ECMI's open membership policy and the diversity of its membership base ensure its independence as a research institute. The Annual General Meeting is usually held in October or November before the Annual Conference. Board Meetings are organised twice each year, usually in February/March and June/July, respectively. The main agenda items are research (publications, projects and events), membership updates and the financial situation.



POLICY IMPACT



publications



task forces

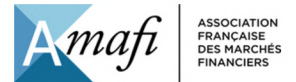


statistics



events

04 ECMI MEMBERS



小規模にこだわる。国際性にこだわる。





Karel Lannoo

General Manager
klannoo@ceps.eu



Apostolos Thomadakis

Head of Research
apostolos.thomadakis@ceps.eu



Beatriz Pozo Pérez

Unit Coordinator
beatriz.pozo@ceps.eu



Alice Orlandini

Events and Communications – Research
Assistant
alice.orlandini@ceps.eu

OUR TEAM

05



European Capital Markets Institute
1 Place du Congrès,
1000 Brussels

Tel: +32 (0) 2 229 39 87
Email: ecmi@ceps.eu

MEMBERSHIP APPLICATION FORM

ORGANISATION INFORMATION

Name:

Address:

Postal code and city:

Country:

Phone number:

Website:

MAIN CONTACT PERSON

Full name:

Job title:

E-mail address:

Phone number:

ADDITIONAL CONTACT PERSON

Full name:

Job title:

E-mail address:

Phone number:

BILLING INFORMATION

Tax register number (VAT for Europe):

Your reference, Customer Purchase Order No. or Cost Code No.:

Responsible department:

Address:

Postal code and city:

Country:

Contact person:

E-mail address:

Phone number:

TYPE OF MEMBERSHIP

CORPORATE / INSTITUTIONAL MEMBER

☐ 1 year, fee: EUR 4 000* per 12 months

BOARD MEMBER

☐ 1 year, fee: EUR 6 700* per 12 months

ACADEMIC MEMBER

☐ 1 year, fee: EUR 500* per 12 months

** Please note that 21% VAT may apply, in accordance with Belgian tax law.*

The minimum duration of membership is 12 months, and it will be renewed tacitly afterwards.

Notice of cancellation is required at least 3 months in advance of the issuance of the next invoice.

☐ I agree to the membership option selected in this form, under the terms and conditions stated above.

Date:

Signature: